

# PRIMO COMBI

## 0.5L MULTI HEAD WEIGHER



### Benefits & Advantages

- The open frame design makes the PrimoCombi the simplest and easiest combination scale to operate, wash, and service providing effortless access to all major components of the scale.
- All contact parts are completely tool-less; pans, buckets, chutes, and the hopper are all designed for quick and easy removal
- Electronics are centrally and conveniently located in a remote mounted washdown and from machine vibration
- The swing out center hopper assembly dramatically simplifies product change over and cleaning; settling the height of the hopper is effortless
- The PrimoCombi uses readily available software including Windows™, Crystal Reports™, Skype™ and integrates with most resource planning and networking software including Oracle™, Plaintree™, Syspro™, and JDEdwards™ to generate customized reports.
- The PrimoCombi can be connected to from anywhere in the world for remote diagnostics, troubleshooting and technical support.

Specifications subject to change without notice.  
120917

# PRIMO COMBI

## 0.5L MULTI HEAD WEIGHER



### Features

- Open frame 304 stainless steel construction
- Tool-less design
- Modular construction & drive assemblies
- Individual product slide chutes for increased speeds with no spiraling
- Swing out hopper assembly
- Remote mounted electrical controls for fast servicing and convenience
- 15 inch true color touch screen PC panel
- Individual weigh bucket processing control
- Plug in vibrator motors
- Quick disconnect control panel
- Microsoft Windows™ - runs with XP, XP Embedded & Windows 7
- Skype™ voice over internet (VOIP) for on the spot assistance
- CanBus wiring architecture
- Wizard function
- Multilingual customizable operator interface
- Automatic self-check start-up routine
- Self-diagnostics
- Advanced security settings and user control
- Triggers & Alerts
- Remote Production Scheduling
- Integrate to ERP / MRP / MES / SCADA
- Import / Export data
- Mix & blending capabilities
- Operating event logging & archiving
- Staggered dumping
- Remote online technical assistance

### Specifications

#### Electrical

- North American 230 VAC / 1 Ph / 60 Hz
- International 240 VAC / 1 Ph / 50 Hz
- All other electrical specifications available on request at additional cost

#### Air

- PrimoCombi: none
- Washdown option:
- North American 1 CFM / 3 - 5 PSI
- International 30 L / min / 0.2 - 0.4 bar

#### Weight Range:

- 5 grams to 25 kilos with multiple dumping

# PRIMO LINEAR

# PRIMO COMBI

## FREE ONLINE SUPPORT

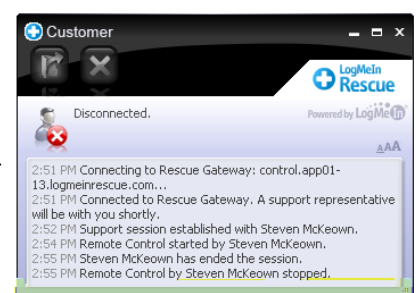
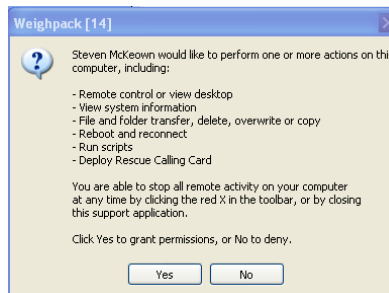
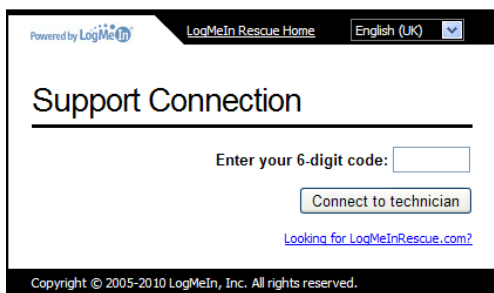


**REAL TIME SUPPORT FROM ANYWHERE IN THE WORLD**

**REDUCE DOWNTIME, CUT COSTS, AND INCREASE PRODUCTIVITY**

### HOW IT WORKS

After making initial contact with our service department, on the color touch screen, simply click on Help and then Remote Support. Through the 360 Operating System, our technician will give you a pin code authorization number to enter on the touch screen at which point you are prompted to give consent to our technician to access the system.



# PRIMO LINEAR

# PRIMO COMBI

## FREE ONLINE SUPPORT



### Benefits & Advantages

- Technicians are available immediately providing real-time support to you
- Eliminate delays related to dispatching of service technicians and travel time
- Online support will pay for itself the first time used
- Cut maintenance costs - eliminate expensive service calls from labor, travel, and out-of-pocket expenses
- Your system is secure - with your ID number, you control who has access to your Primo

### Features

- Utilizes the latest in digital, technical support available on the market today including brand-name software like Skype™, LogMeIn™, and VNC™
- Wireless or landline connectivity
- Secure system requiring a pin code and your consent for our technicians to access your system
- Software and firmware updates including new Primo features
- Touch screen panel is supplied with multiple USB ports for peripherals such as digital cameras and headsets allowing us to see what you see and for your staff to speak directly to our service technician