

# PRIMO LINEAR

## C-25 TWIN LANE CONFIGURATION



### Benefits and Advantages

- The only conveyORIZED automatic scale of its kind, the C-series is designed for all difficult products that cannot typically run on traditional vibratory pans as well as delicate products that need soft handling.
- Automatic / pneumatic gate increases accuracy ensuring no additional product moves along the bulk conveyor.
- Pneumatics are not mounted to the weigh bucket; air lines do not have to be disconnected eliminating risk of contamination.
- Dual load cells per weigh bucket ensure proper weight distribution.
- Tool-less removable conveyors, hopper, and discharge chute.
- All PrimoLinears include open frame design for clean ability and service ability.
- Anti-vibration leveling pads increase accuracy of measured product.
- Built independent of floor frame for additional performance and flexibility.

# PRIMO LINEAR

## C-25 TWIN LANE CONFIGURATION



*Tool-less removable belt*



*Tool-less removable hopper*

### Features

- Full range usable up to 25 quart (25L) weigh bucket volume
- Separate bulk & dribble settings
- Foot pedal activated or automatic dump cycle
- Reads in one gram increments
- Fully adjustable cycle dwell time for automatic sequencing
- 304 stainless steel contact parts
- Full seam weld construction with ground, polished joints
- Air regulator, filter and lubricator
- Quick clamp weigh bucket
- Flow controls on pneumatic door opening assembly and bulk gate mechanism
- Complete stainless steel construction

### Specifications

#### Electrical

- North American 110 VAc / 60 Hz
- International 240 VAC / 1 Ph / 50 Hz
- All other electrical specifications available on request at additional cost

#### Air

- North American 1 CFM / 60 PSI
- International 30L / min / 4 bar

#### Weight Range

- 2 lbs - 100 lbs (1 kg - 4 kg).  
Subject to product density



## FREE ONLINE SUPPORT

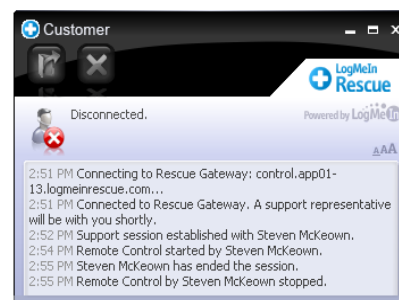
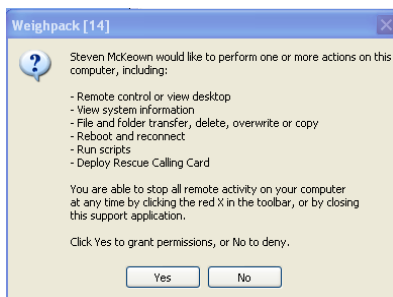
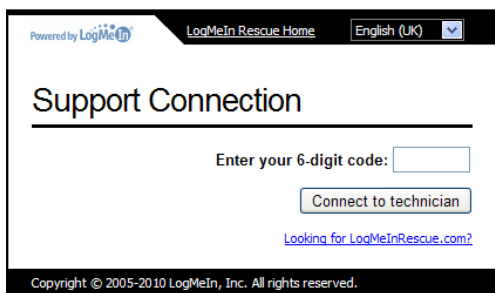


### REAL TIME SUPPORT FROM ANYWHERE IN THE WORLD

### REDUCE DOWNTIME, CUT COSTS, AND INCREASE PRODUCTIVITY

#### HOW IT WORKS

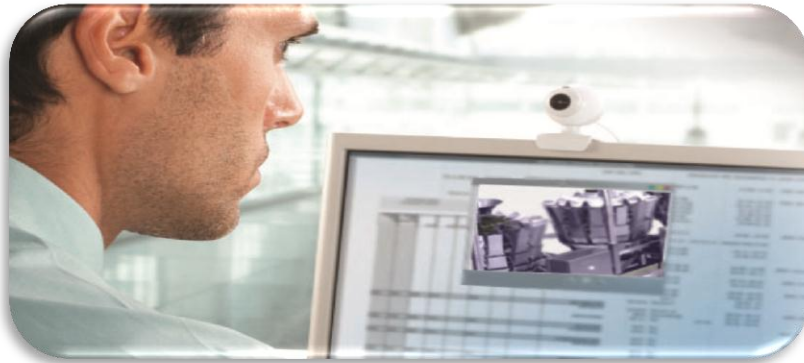
After making initial contact with your service department, on the color touch screen, simply click on Help and Remote Support. Through the Primo Operating System, our technician will give you a pin code authorization number to enter on the touch screen at which point you are prompted to give consent to our technician to access the system.



# PRIMO LINEAR

# PRIMO COMBI

## FREE ONLINE SUPPORT



### Benefits & Advantages

- Technicians are available immediately providing real-time support to you
- Eliminate delays related to dispatching of service technicians and travel time
- Online support will pay for itself the first time used
- Cut maintenance costs - eliminate expensive service calls from labor, travel, and out-of-pocket expenses
- Your system is secure - with your ID number, you control who has access to your Primo

### Features

- Utilizes the latest in digital, technical support available on the market today including brand-name software like Skype™, LogMeIn™, and VNC™
- Wireless or landline connectivity
- Secure system requiring a pin code and your consent for our technicians to access your system
- Software and firmware updates including new Primo features
- Touch screen panel is supplied with multiple USB ports for peripherals such as digital cameras and headsets allowing us to see what you see and for your staff to speak directly to our service technician