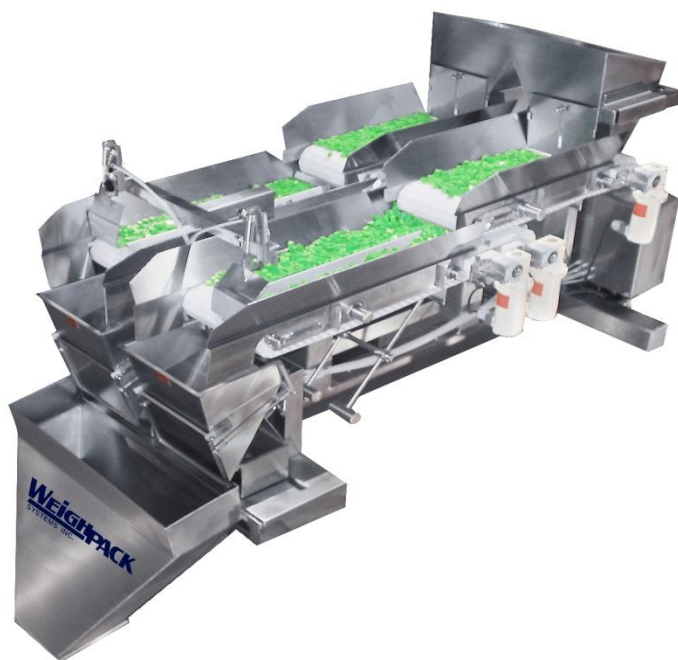


PRIMO LINEAR

C-9 TWIN LANE CONFIGURATION



Benefits and Advantages

- The only conveyORIZED automatic scale of its kind, the C-series is designed for all difficult products that cannot typically run on traditional vibratory pans as well as delicate products that need soft handling.
- Tool-less disassembly and removal of hopper, weigh bucket & funnel. Quick disconnects reduce down time when cleaning and changing products.
- Automatic / pneumatic gate increases accuracy ensuring no additional product moves along the bulk conveyor.
- Pneumatics are not mounted to the weigh bucket; air lines do not have to be disconnected eliminating risk of contamination.
- Tool-less removable conveyors, hopper and discharge chute.
- All PrimoLinears include open frame design for clean ability and service ability.
- Anti-vibration leveling pads increase accuracy of measured product.
- Built independent of floor frame for additional performance and flexibility.

PRIMO LINEAR

C-9 TWIN LANE CONFIGURATION



Tool-less removable belt



Tool-less removable hopper

Features

- Full range usable up to 9 quart (9L) weigh bucket volume
- Separate bulk & dribble settings
- Foot pedal activated or automatic dump cycle
- Reads in one gram increments
- Fully adjustable cycle dwell time for automatic sequencing
- Adjustable dwell time for weigh bucket door opening
- 304 stainless steel contact parts
- Full seam weld construction with ground, polished joints
- Off-center load-cell with overload protection
- Quick clamp weigh bucket
- Flow controls on pneumatic door opening assembly and bulk gate mechanism
- Complete stainless steel construction

Specifications

Electrical

- North American 110 VAC / 60 Hz
- International 240 VAC / 1 Ph / 50 Hz
- All other electrical specifications available on request at additional cost

Air

- North American 1 CFM / 60 PSI
- International 30 L / min / 4 bar

Weight Range

- 1 oz. - 10 lbs. (28 g. - 4 kg.).
Subject to product density



FREE ONLINE SUPPORT

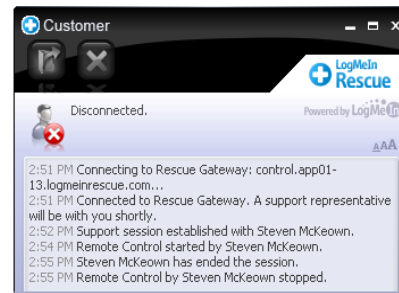
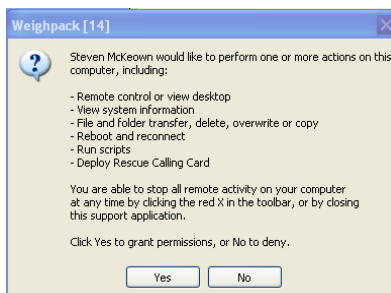
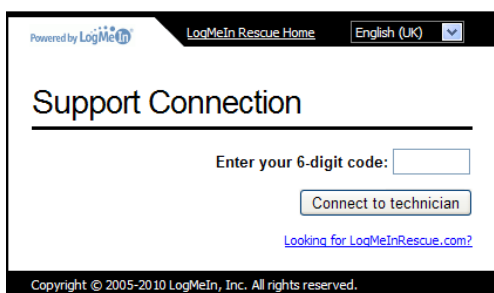


REAL TIME SUPPORT FROM ANYWHERE IN THE WORLD

REDUCE DOWNTIME, CUT COSTS, AND INCREASE PRODUCTIVITY

HOW IT WORKS

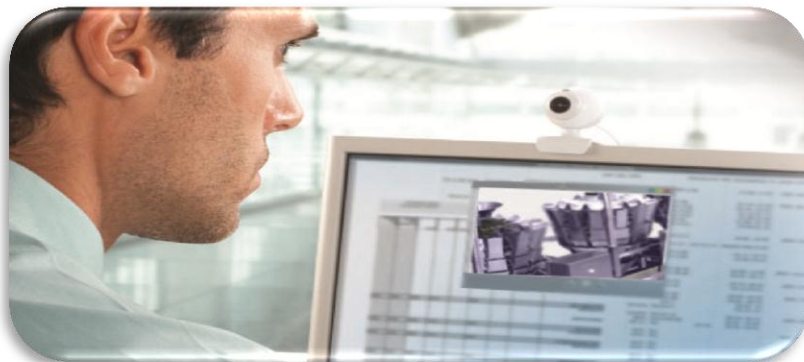
After making initial contact with our service department, on the color touch screen, simply click on Help and then Remote Support. Through the Primo Operating System, our technicians will give you a pin code authorization number to enter on the touch screen at which point you are prompted to give consent to our technician to access the system.



PRIMO LINEAR

PRIMO COMBI

FREE ONLINE SUPPORT



Benefits & Advantages

- Technicians are available immediately providing real-time support to you
- Eliminate delays related to dispatching of service technicians and travel time
- Online support will pay for itself the first time used
- Cut maintenance costs - eliminate expensive service calls from labor, travel, and out-of-pocket expenses
- Your system is secure - with your ID number, you control who has access to your Primo

Features

- Utilizes the latest in digital, technical support available on the market today including brand-name software like Skype™, LogMeIn™, and VNC™
- Wireless or landline connectivity
- Secure system requiring a pin code and your consent for our technicians to access your system
- Software and firmware updates including new Primo features
- Touch screen panel is supplied with multiple USB ports for peripherals such as digital cameras and headsets allowing us to see what you see and for your staff to speak directly to our service technician