

PRIMO LINEAR

V-25 LINEAR NET WEIGHER SINGLE LANE



Benefits and Advantages

- Automatic / pneumatic gate increases accuracy ensuring no additional product moves along the bulk pan.
- Pneumatics are not mounted to the weigh bucket; air lines do not have to be disconnects eliminating risk of contamination.
- Anti-vibration leveling pads increase accuracy of measured product.
- Built independent of floor frame for additional performance and flexibility.
- Open frame design provides easy access to all areas of the PrimoLinear making sanitation quick and easy.
- Each lane includes 2 load cells located on both ends of the weigh bucket in order to provide more stable weight measurement and accuracy.

PRIMO LINEAR

V-25 LINEAR NET WEIGHER SINGLE LANE



Features

- 2 lbs (1 kg) to 50 lbs (22 kg) adjustable weight range subject to density
- Sequential, random or latch cycle dumping
- Flow controls on pneumatic door opening assembly and bulk gate mechanism
- Full range usable up to 25 quart (25L) weigh bucket volume
- Reads in one gram increments
- Off-center load-cell with overload protection
- Foot pedal activated or automatic dump cycle
- Two speed control on dribble pan
- Quick clamp weigh bucket assembly
- Adjustable dwell time for weigh bucket door opening
- Dual parallel load cells per weigh head
- Full seam weld construction with ground, polished joints
- Air regulator, filter and lubricator
- Modular frame design - expandable
- Complete stainless steel construction

Specifications

Electrical

- North American 110 VAC / 60 Hz
- International 240 VAC / 1 Ph / 50 Hz
- All other electrical specifications available on request at additional cost

Air

- North American 1 CFM / 60 PSI
- International 30 L / min / 4 bar

Weight Range

- 2 lbs - 50 lbs (1 kg - 22 kg). Subject to product density



FREE ONLINE SUPPORT

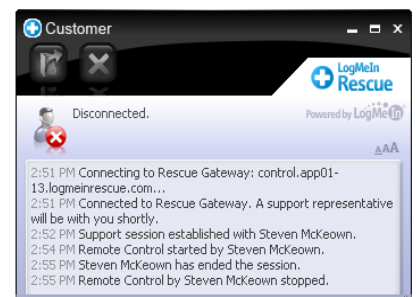
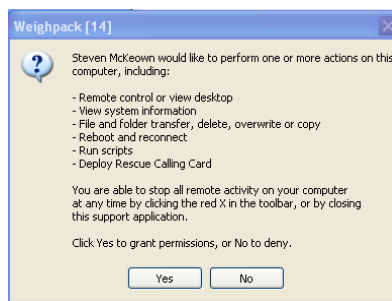
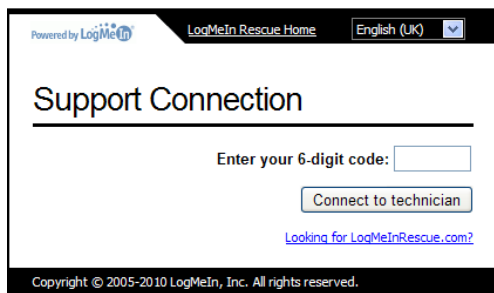


REAL TIME SUPPORT FROM ANYWHERE IN THE WORLD

REDUCE DOWNTIME, CUT COSTS, AND INCREASE PRODUCTIVITY

HOW IT WORKS

After making initial contact with our service department, on the color touch screen, simply click on Help and then Remote Support. Through the Primo Operating System, our technician will give you a pin code authorization number to enter on the touch screen at which point you are prompted to give consent to our technician to access the system.



PRIMO LINEAR PRIMO COMBI

FREE ONLINE SUPPORT



Benefits & Advantages

- Technicians are available immediately providing real-time support to you
- Eliminate delays related to dispatching of service technicians and travel time
- Online support will pay for itself the first time used
- Cut maintenance costs - eliminate expensive service calls from labor, travel, and out-of-pocket expenses
- Your system is secure - with your ID number, you control who has access to your Primo

Features

- Utilizes the latest in digital, technical support available on the market today including brand-name software like Skype™, LogMeIn™, and VNC™
- Wireless or landline connectivity
- Secure system requiring a pin code and your consent for our technicians to access your system
- Software and firmware updates including new Primo features
- Touch screen panel is supplied with multiple USB ports for peripherals such as digital cameras and headsets allowing us to see what you see and for your staff to speak directly to our service technician