



## V-MINI LINEAR NET WEIGHER TWO LANE



### Benefits and Advantages

- The PrimoLinear V-mini is ideal for very small package sizes and weights as low as one gram and reads 1/100th of gram increments.
- Typical applications include diced meats, cheese, nuts, ingredients, fine particulars such as salts, coarse products including spices and herbs, and pharmaceuticals.
- The scale is an easy to operate linear scale most commonly used in semi-automatic operation or small production requirements.
- The PrimoLinear V-mini eliminates hand weighing and filling, thereby increasing the speed and accuracy at which packaging is done, and also reduces product giveaway.
- Quick disconnects and tool-less removal of hopper, weigh bucket, and funnel reduces down time when cleaning and changing products.

# PRIMO LINEAR

## V-MINI LINEAR NET WEIGHER TWO LANE



### Features

- Vibratory feed pans
- Digital independent vibrator speed control
- Adjustable electronic filtering
- Foot pedal activated or automatic dump cycle
- Multi-speed control
- Stainless steel hopper
- Single size stainless steel funnel
- 304 stainless steel contact parts
- Full seam weld construction with ground, polished joints
- Stainless steel construction

### Specifications

#### Electrical

- North American 110 VAC / 60 Hz
- International 240 VAC / 1 Ph / 50 Hz
- All other electrical specifications available on request at additional cost

#### Air

- North American 1 CFM / 60 PSI
- International 30 L / min / 4 Bar

#### Weight Range

- 1 g - 200 g. Subject to product density

# PRIMO LINEAR

# PRIMO COMBI

## FREE ONLINE SUPPORT

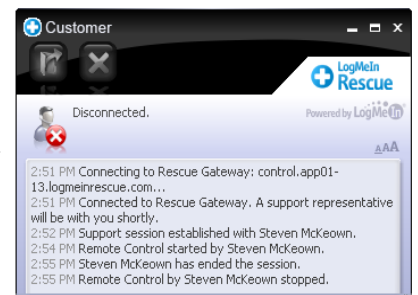
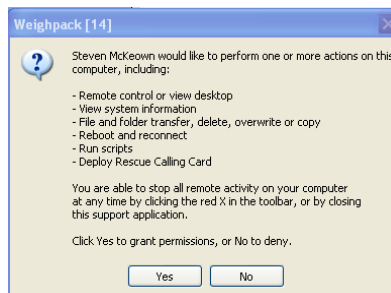
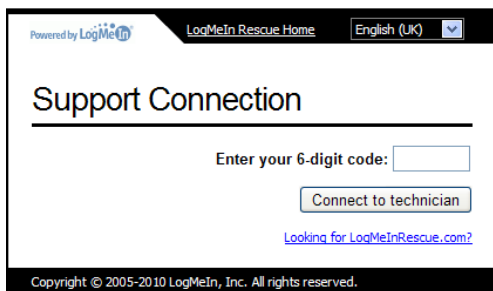


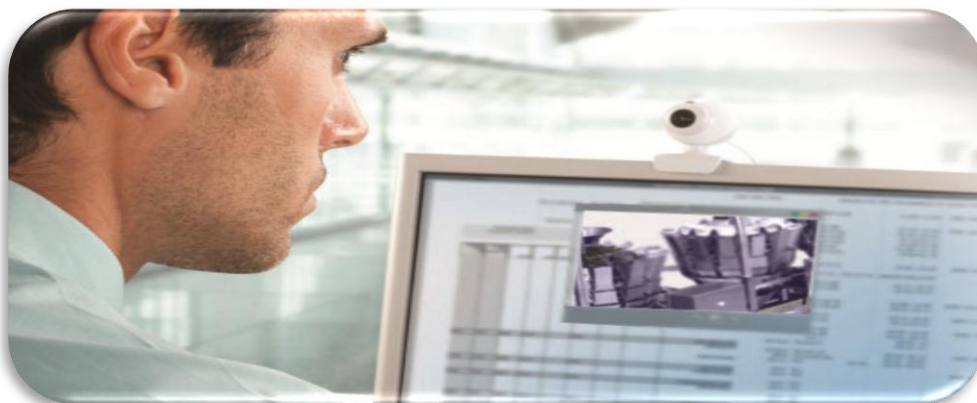
**REAL TIME SUPPORT FROM ANYWHERE IN THE WORLD**

**REDUCE DOWNTIME, CUT COSTS, AND INCREASE PRODUCTIVITY**

### HOW IT WORKS

After making initial contact with our service department, on the color touch screen, simply click on Help and then Remote Support. Through the Primo Operating System, our technician will give you a pin code authorization number to enter on the touch screen at which point you are prompted to give consent to our technician to access the system.





## Benefits & Advantages

- Technicians are available immediately providing real-time support to you
- Eliminate delays related to dispatching of service technicians and travel time
- Online support will pay for itself the first time used
- Cut maintenance costs - eliminate expensive service calls from labor, travel, and out-of-pocket expenses
- Your system is secure - with your ID number, you control who has access to your Primo



## Features

- Utilizes the latest in digital, technical support available on the market today including brand-name software like Skype™, LogMeIn™, and VNC™
- Wireless or landline connectivity
- Secure system requiring a pin code and your consent for our technicians to access your system
- Software and firmware updates including new Primo features
- Touch screen panel is supplied with multiple USB ports for peripherals such as digital cameras and headsets allowing us to see what you see and for your staff to speak directly to our service technician